



**Lee, Victor  
(Singapore)**

PLY Studio  
vlee@ply-studio.com

Victor Lee is the founder and Director of Plystudio Architects, a design-driven architectural practice based in Singapore. He is a registered architect in Singapore and the UK, where he trained at the Architectural Association in London.

He is deeply rooted in the belief that architecture is fundamentally driven by an honest expression of form and structure within the economy of building. This preoccupation coupled with a fascination with the climatic, contextual and cultural interactions of any given environment feature consistently in the work of Plystudio Architects across all building scales within the inter-related fields of interiors, architecture and urbanism.

Victor has sustained interests in propagating design through writing, curatorial and other critical efforts. He has written for several publications, has taught at and continues to teach at the National University of Singapore School of Architecture as a design studio tutor. In 2018 he was an invited speaker for the Singapore Institute of Architects' Archifest Conference, amongst other engagements.

TOPIC 1: AFFORDABLE HOUSING

TOPIC 2: FILM PRODUCTION STUDIOS

TOPIC 3: H-HOUSE

PLYSTUDIOARCHITECTS







# AFFORDABLE HOUSING

## PLYSTUDIO ARCHITECTS

PLYSTUDIOARCHITECTS

### EMBAKASI HOUSING

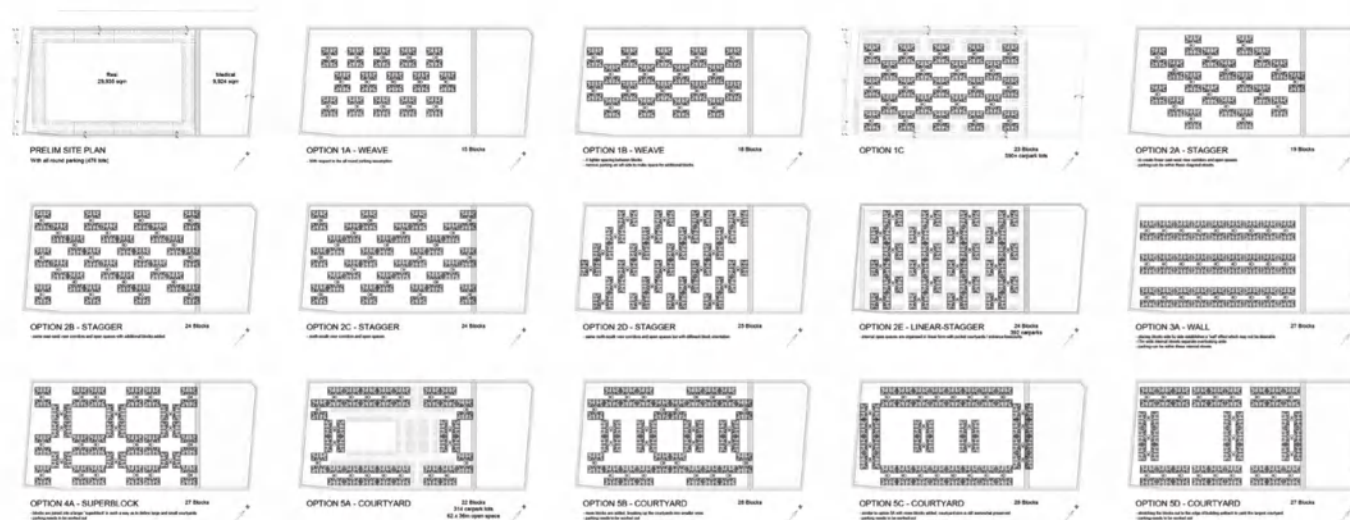
USE  
Affordable Housing

STATUS  
Ongoing

LOCATION  
Embakasi, Nairobi, Kenya

SIZE  
50,000 sqm

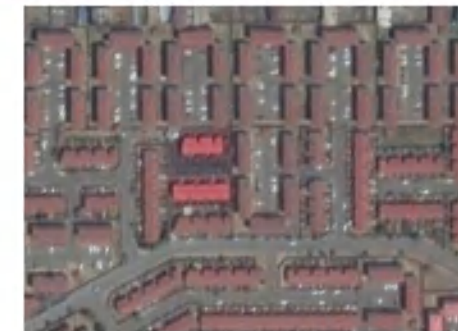
Using the Multi-Storey Carpark as a typological approach to creating a 'car-free' housing development, where scarce open spaces can be freed up for communal facilities to relief an otherwise dense East African suburban estate.



Often working with the theme of building economy in mind, a recent opportunity to design for affordable housing in Nairobi, the capital of Kenya in East Africa has put the practice on a task to probe even deeper into the understanding of construction processes and how to derive economies out of the scarce financial and material resources that are made available to a project.

The economy of Kenya is the highest by GDP in East and Central Africa. With typical building and construction costs amounting to one-fifth that of Singapore, what are the skills and knowledge that we can take with us? Can we apply the standard mode of practice in working within such a different economy? In the age of globalisation, are urban our skillsets transferrable to a less urban (rural) environment? Can we apply our knowledge universally - in a world that seems to be getting smaller, yet people are doing much bigger and crazier things? How can we find an economy of building under such conditions?

Having been to Africa and back, Plystudio Architects will share some insights on the design process for the project and offer parallel views on the burgeoning city of Nairobi, the romantic wilderness, and all other things in between.



Existing Residential Typologies



Motor-Centric Urban Environment

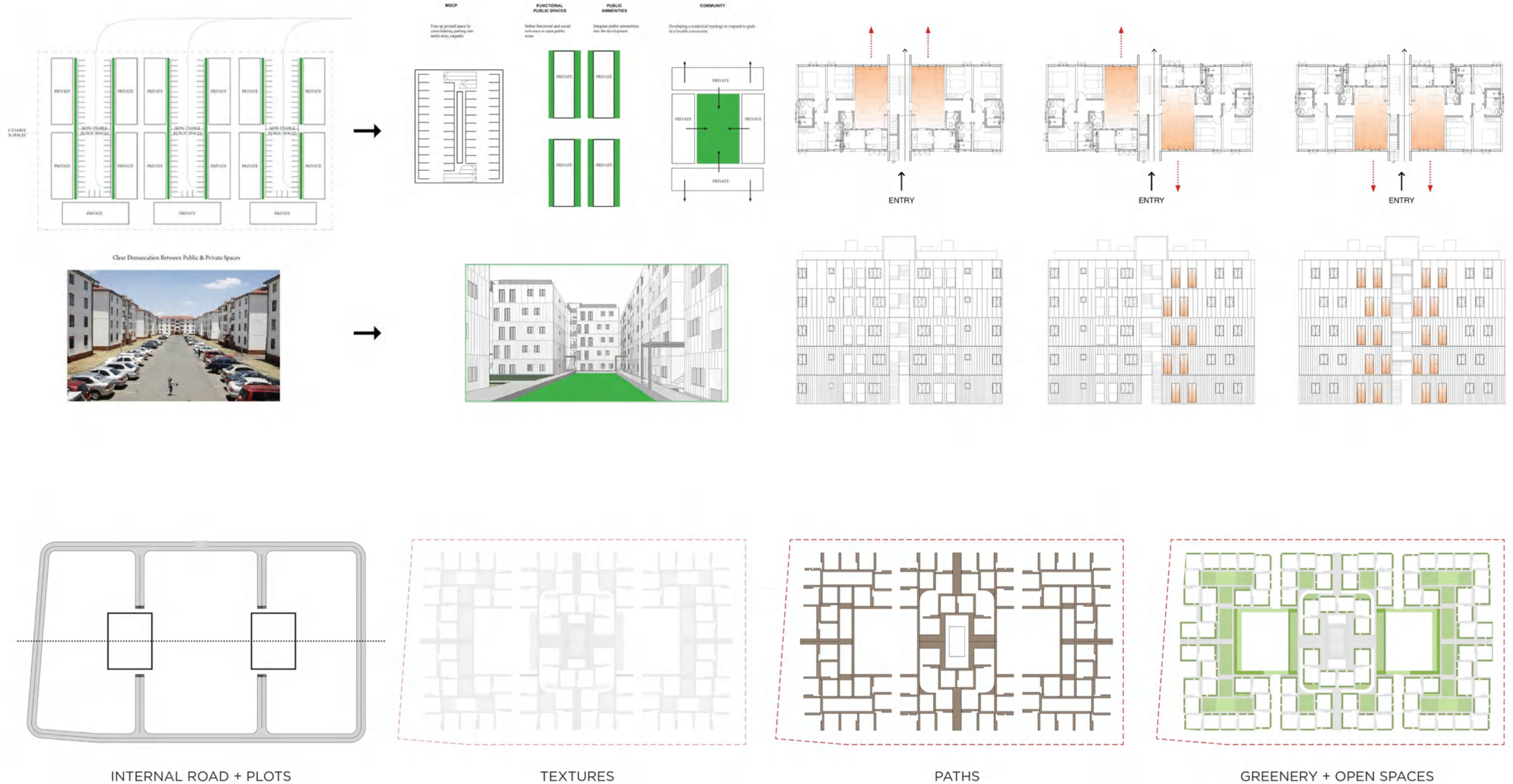




# AFFORDABLE HOUSING

## PLYSTUDIO ARCHITECTS

PLYSTUDIOARCHITECTS







# FILM PRODUCTION STUDIOS

## PLYSTUDIO ARCHITECTS

PLYSTUDIOARCHITECTS

### BATAM FILM STUDIOS

USE  
Production, Office

STATUS  
Completed

LOCATION  
Batam, Indonesia

SIZE  
4,000 sqm

IN ASSOCIATION WITH  
PT Haskon (Local Architect)

**A borrowed typology of streets and village houses lends physical and spatial form to atypical work and office spaces for a leading film production company.**



This project continues Plystudio Architects' interest in defining and reinterpreting 'types' borne out of 'conventions'. The project takes reference from the traditional Indonesian archetype of 'street' and 'village' as the starting point for organising the internal volumes and circulation within the large ceiling heights and deep floor plan of the abandoned shell of a former golf clubhouse. Coupled with a strategy for ventilation, excessive air-conditioning and high cooling loads can be moderated. The design is the result of mediating opposing needs for the lower ground floor studio spaces (more closed) and the upper ground level public spaces (more open), without disrupting the vernacular character of the building. The upper level maximises views out, a kind of 'voided' floor that separates the overarching roof form from the heavier base, allowing the presence of both to be simultaneously felt.

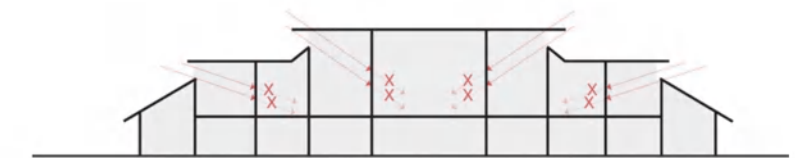
With the expansion of its business into a new integrated complex with enhanced film production facilities, the new spaces will provide artistes, crew and staff a unique experience of work and play in an environment of contrasts.



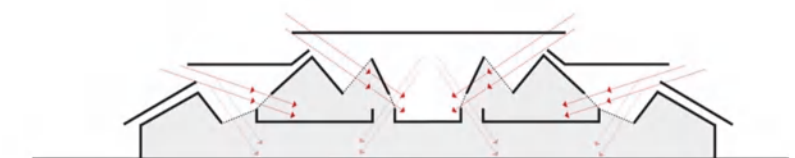
Existing Roof and single large volume space



Low Ceiling subdivision - minimal cooling load but with little daylight penetration



High Wall subdivision - creates high cooling loads and limits daylight penetration



Modulated subdivision - moderate cooling loads, varied ceiling heights and daylight penetration

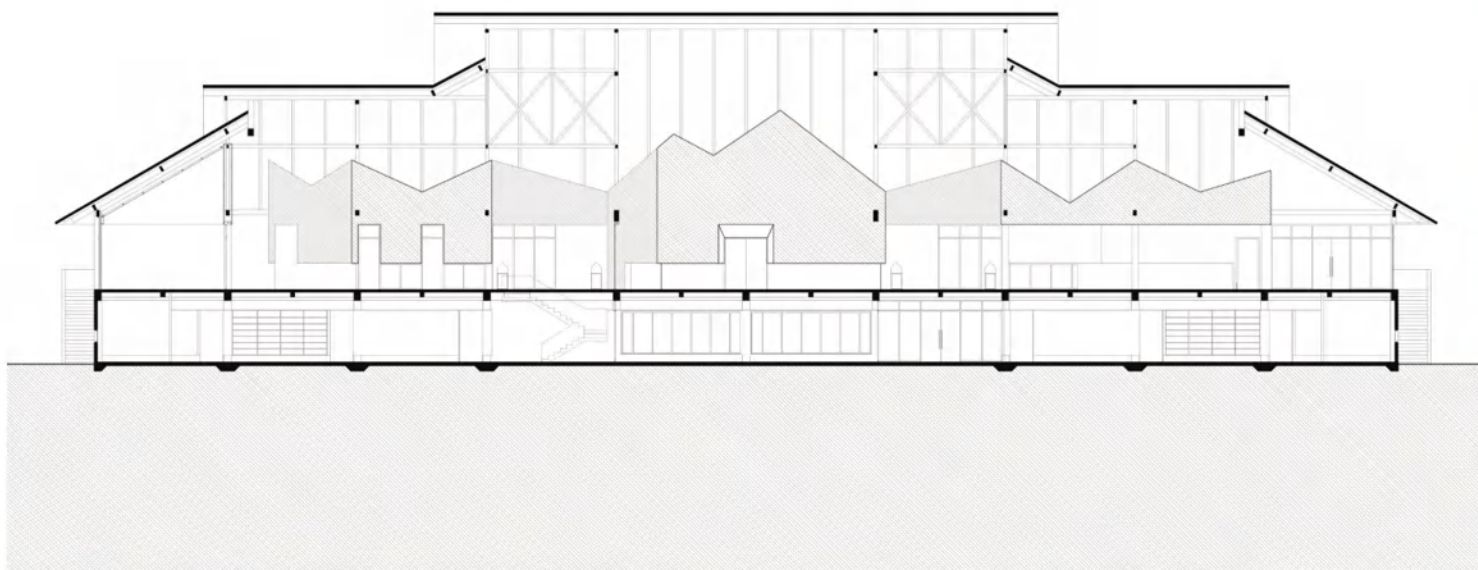




# FILM PRODUCTION STUDIOS

PLYSTUDIO ARCHITECTS

PLYSTUDIOARCHITECTS







# H-HOUSE

## PLYSTUDIO ARCHITECTS

PLYSTUDIOARCHITECTS

### H-HOUSE

USE  
Private Residence

STATUS  
Completed

LOCATION  
East Coast, Singapore

SIZE  
350 sqm

This is a 3 storey new erection of an intermediate terrace house within a typical landed housing estate in the East Coast of Singapore. This project discusses the typical Terrace House typology in Singapore and the planning controls that shape its form. The project deploys simple organisational strategies for circulation and services which are further articulated by the introduction of green pockets within the plan, optimising views, light and air.



An open plan house maximising room widths, creating contiguous living zones punctuated by staggered air wells and voids







# H-HOUSE

PLYSTUDIO ARCHITECTS

PLYSTUDIOARCHITECTS

